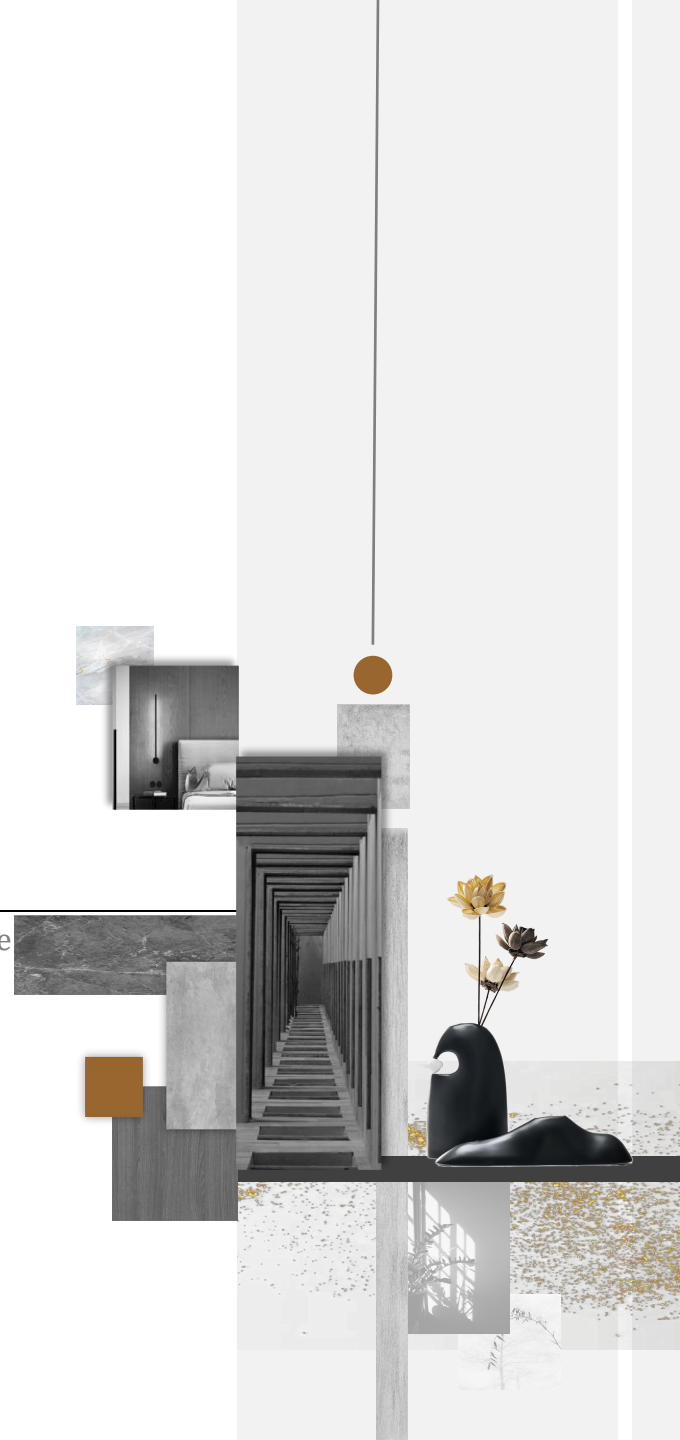


# 渝兴观悦庭、旖岚台入户门厅及架空功能层软装设计方案

渝兴观悦庭、旖岚台入户门厅及架空功能层软装设计方案 Soft Decoration Design Scheme





目录  
CONTENTS

项目概况  
Project Overview

项目分析  
Project Analysis

项目主题  
Project theme

风格定位  
Style positioning

设计思想  
Design ideas

设计理念  
Design concept

色彩提取  
Color extraction

材质分析  
Material Analysis

方案设计  
Plane Analysis

平面布置图  
Floor Plan

动线分析  
Dynamic analysis

效果图展示  
Renderings

软装示意  
Soft-suit gesture



# PART.01

## 项目概况 Project Overview

项目分析  
Project Analysis

项目主题  
Project theme

风格定位  
Style positioning

*Adhering to the art appreciation principle*



# Project Analysis

## 项目分析

秉承“耳目一新、赏心悦目”的艺术欣赏原则，将艺术与商业完美结合，为国内中产阶级和个性化时尚资产阶级的新时代提供物有所值的当代艺术。面对公众，在提供必备功能的同时融合现代生活习惯，入户大厅和挑空层作为一个公共空间有更多的可能性。

Adhering to the principle of "refreshing and pleasing to the eye" in art appreciation, we perfectly combine art and commerce to provide value for money contemporary art for the new era of the domestic middle class and personalized fashion bourgeoisie. Facing the public, while providing essential functions and integrating modern living habits, there are more possibilities for the entrance hall and the empty floor as a public space.



# Project Theme 项目主题

极简主义是一种生活态度，更是一种生活习惯，舍弃华而不实的装饰，保留纯粹的生活所需，是精神生活的简化。

Minimalism is an attitude towards life, as well as a habit of living, abandoning flashy decorations and retaining pure life needs, which is a simplification of spiritual life.



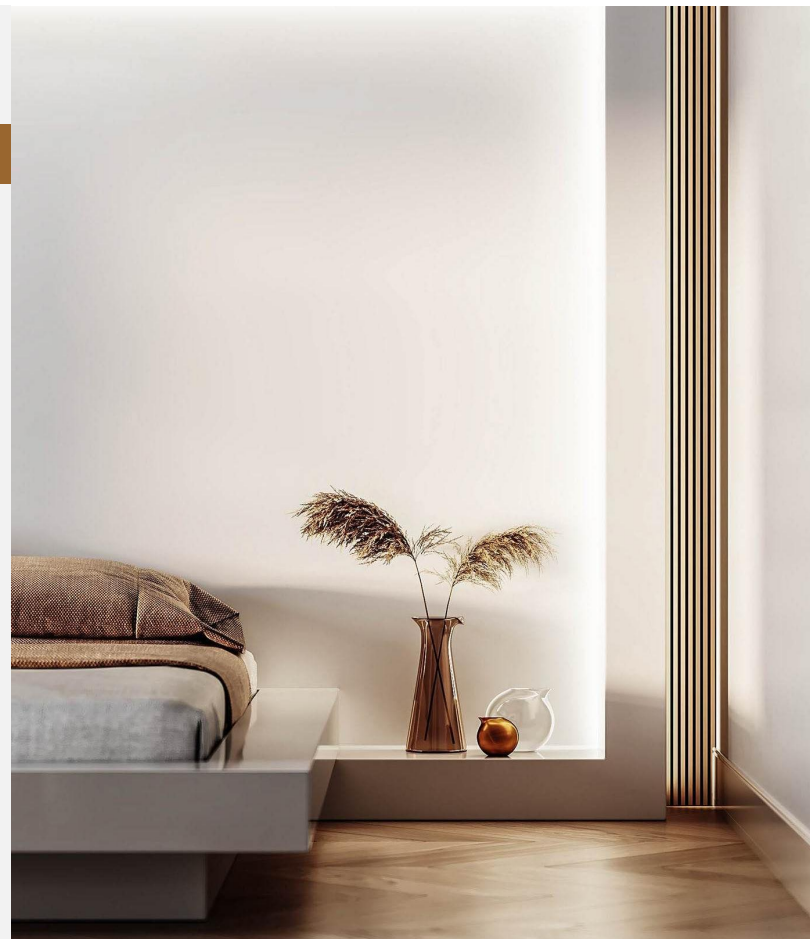
# Style positioning

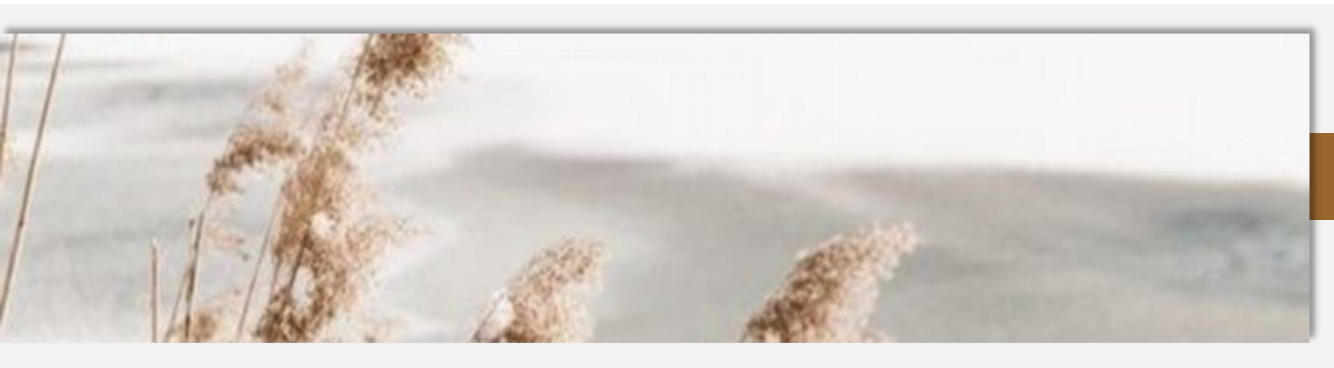
风格定位

*Adhering to the art  
appreciation  
principle*

本案定义为意式极简，简约而不失时尚、低调而不失优雅、又极简的设计演绎功能的同时提现楼盘意式轻奢美学，使忙碌的业主在家能够享受简单而精致的生活。

This case is defined as Italian minimalism, which is simple yet stylish, understated yet elegant, and minimalist in design. While highlighting the Italian luxury aesthetics of the property, it allows busy homeowners to enjoy a simple and exquisite life at home.





## PART.02

设计思想  
Design ideas

设计理念  
Design concept

色彩提取  
Color extraction

材质分析  
Material Analysis



线



色



质



影

*Adhering to the art  
appreciation  
principle*

## Design concept

主色调黑、白、灰、咖、大地色  
一些亮丽的颜色作点缀

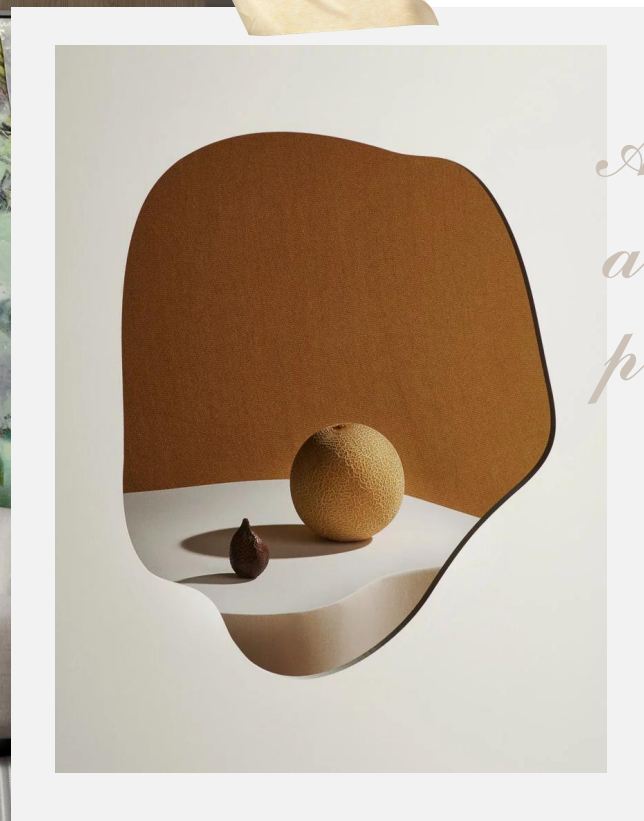
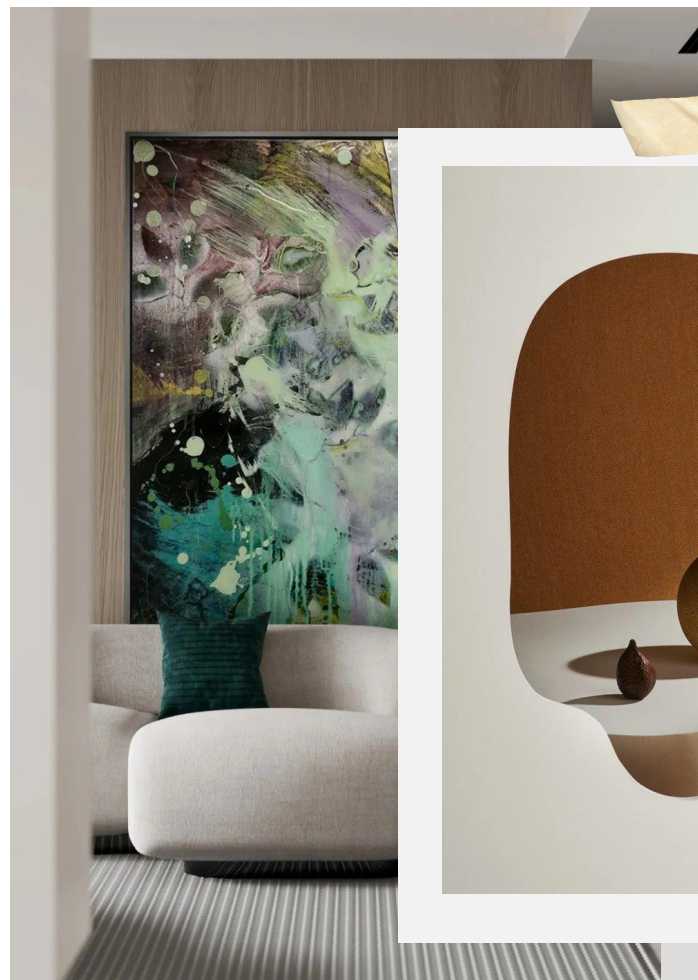


# Color Scheme

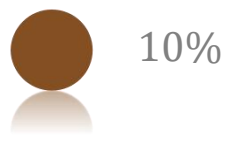
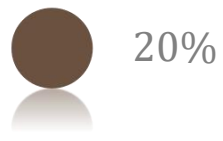
## 色彩提取

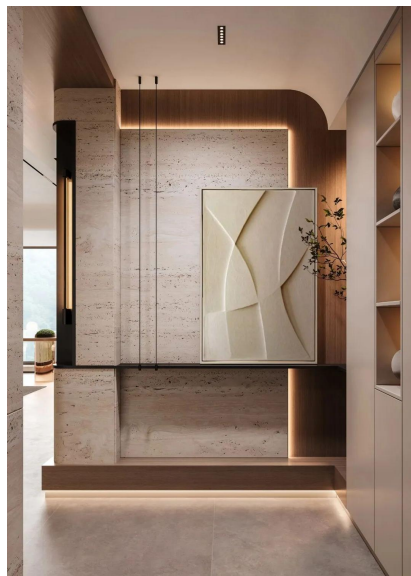
软装在选择上延续硬装中大面积铺陈的底色，以灰色为主，整体色调稳重大气，再以装饰品点缀少量亮色，增加层次感

In terms of soft decoration, the selection continues the background color that is widely spread in hard decoration, with gray as the main color. The overall color tone is stable and atmospheric, and a small amount of bright colors are added with decorations to enhance the sense of layering



*Adhering to the  
art appreciation  
principle*





# Material Analysis

## 材质分析

Adhering to the art appreciation principle of "refreshing and pleasing to the eye", the gallery combines art and commerce perfectly to provide the new era of the domestic middle class and personalized fashionable bourgeois with value-for-money contemporary art. Facing the general public, between the traditional rigorous gallery and the cafe for rest, the gallery as a public space has more possibilities.

皮 木 石材 金属 不锈钢



# PART.03

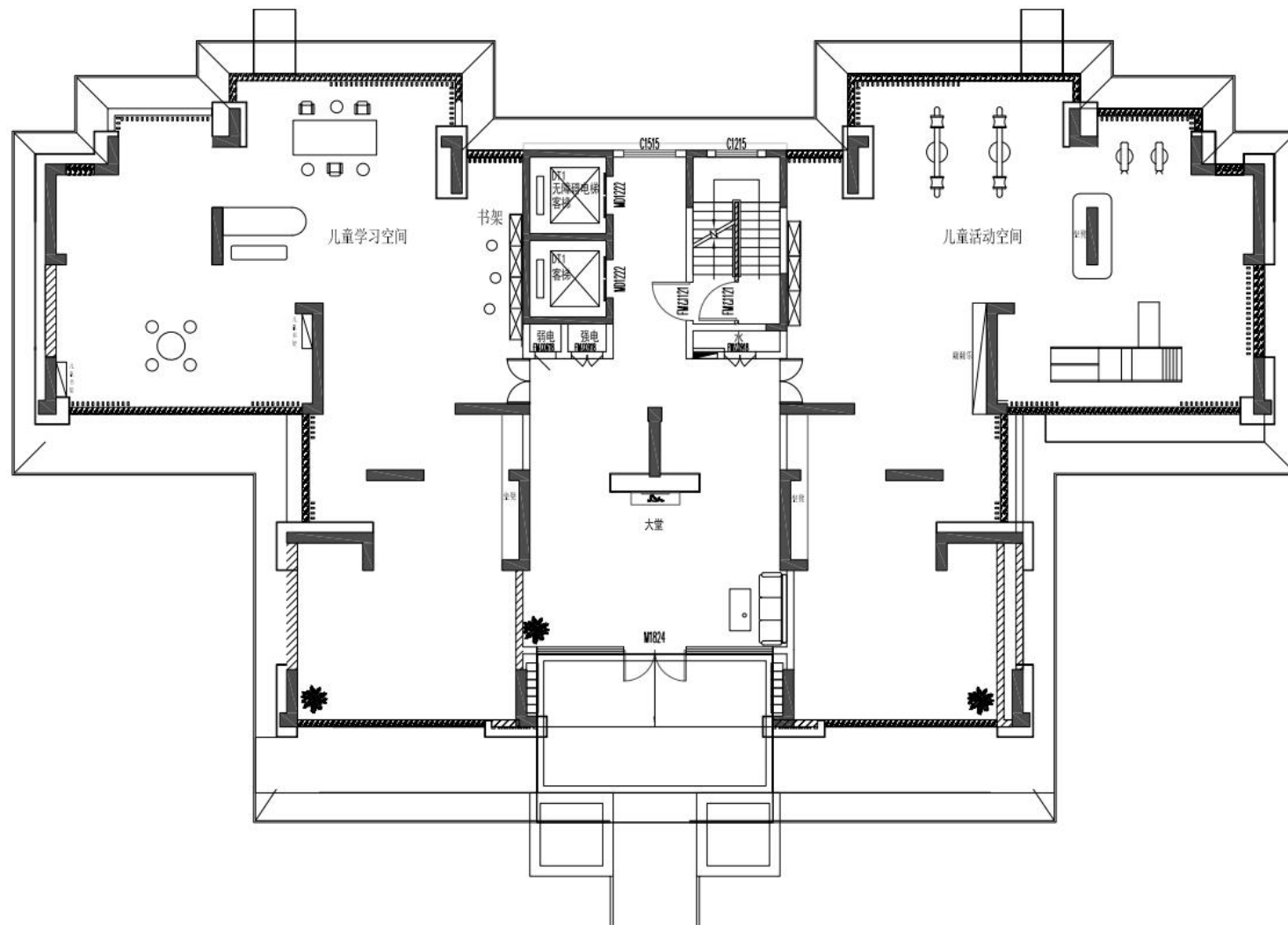
平面分析  
Plane Analysis

平面布置图  
Floor Plan

动线分析  
Dynamic analysis

# Floor Plan

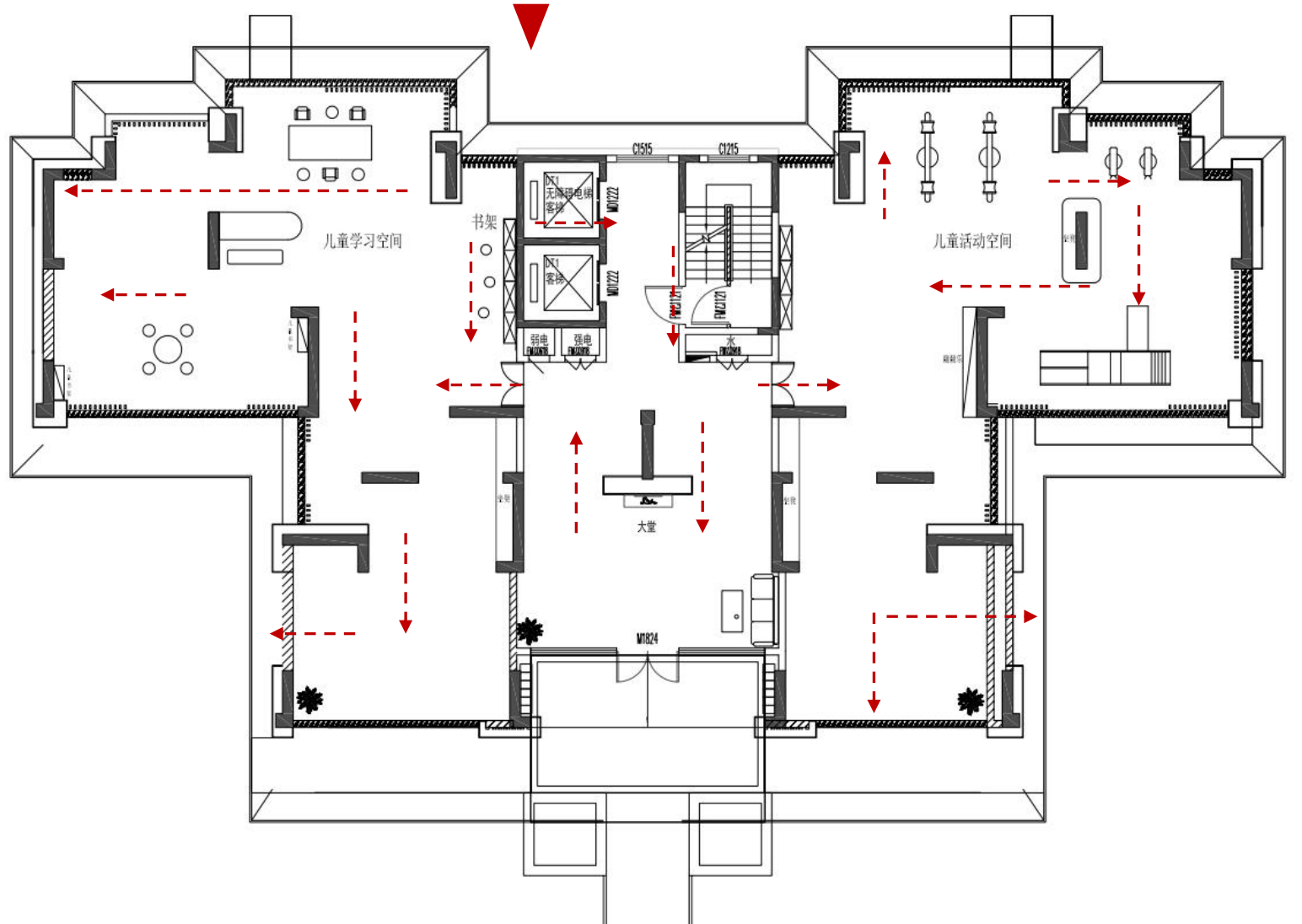
## 37号楼20栋 儿童活动中心



# Dynamic analysis

## 动线分析

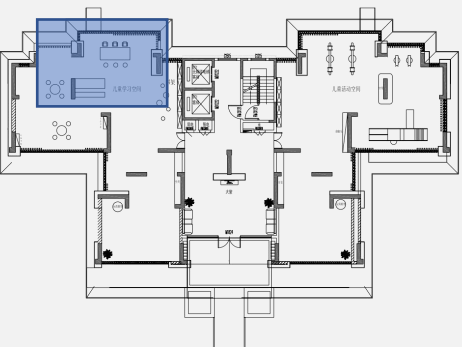
- 1: 保留足够的活动区域
- 2: 保证场所通道循环
- 3: 动静分区



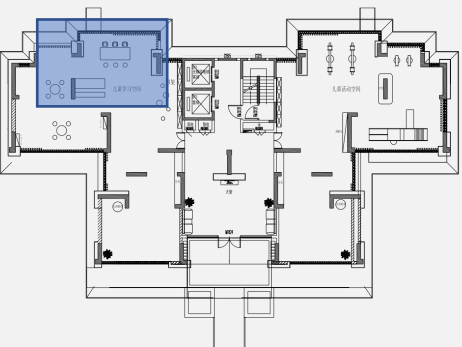
▲ Please enter the title

---▶ Please enter the title

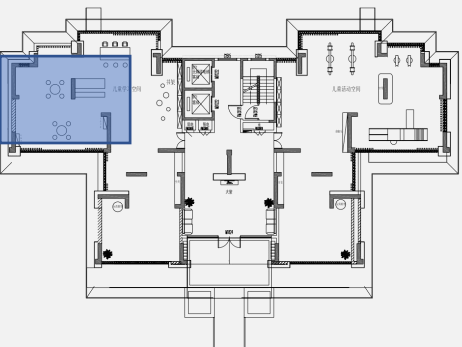
# 儿童区 效果图展示



# 儿童区 效果图展示

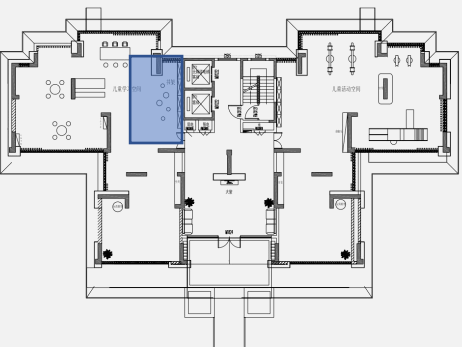


# 儿童区 效果图展示





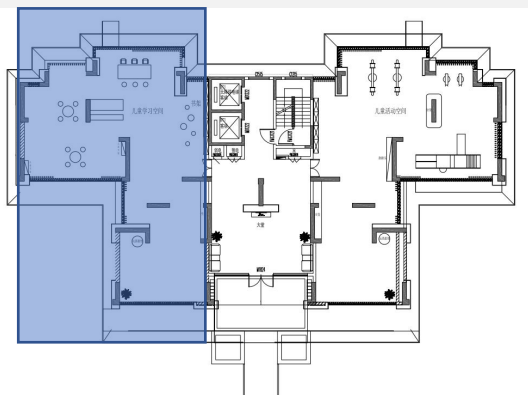
# 儿童区 效果图展示



备注：书架用钢架底座抬高。

# Floor Plan

## 37号楼20栋 儿童学习中心 产品配置



手工桌



儿童手工椅



蘑菇凳



绘画桌



绘画凳



阅读桌



动物书架

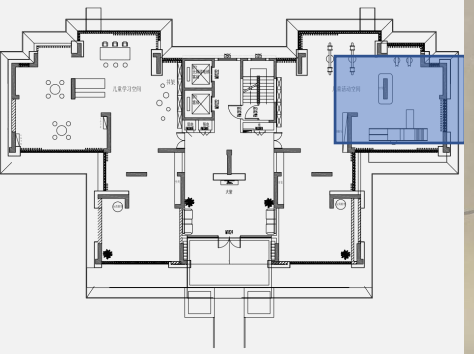


黑板书架

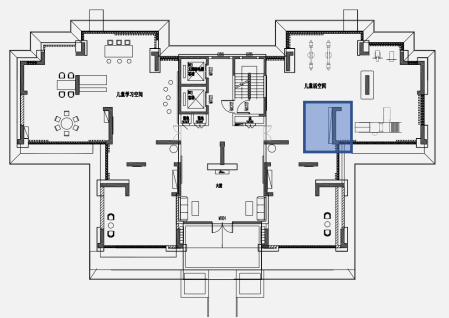


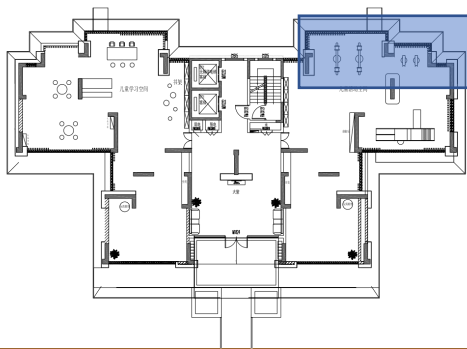
书架

# 儿童区 效果图展示



# 儿童区 效果图展示



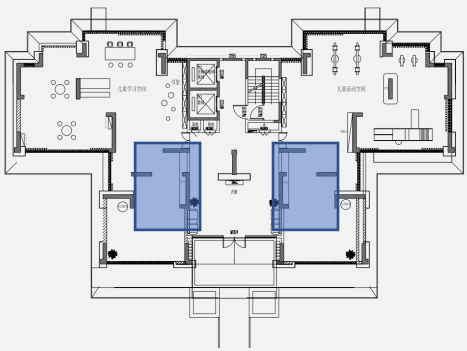


## 效果图展示

动静分区，让儿童体会各种娱乐方式，让生活更加多姿多彩，给儿童一个完美的活动空间

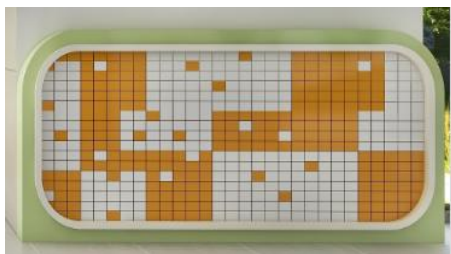
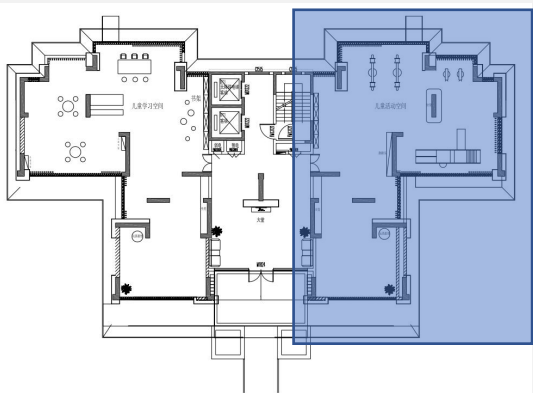


# 儿童区 效果图展示



# Floor Plan

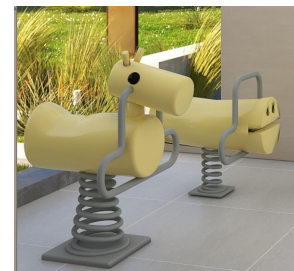
## 37号楼20栋 儿童娱乐中心 产品配置



翻翻乐



跷跷板



摇摇木马



滑滑梯



包柱沙发



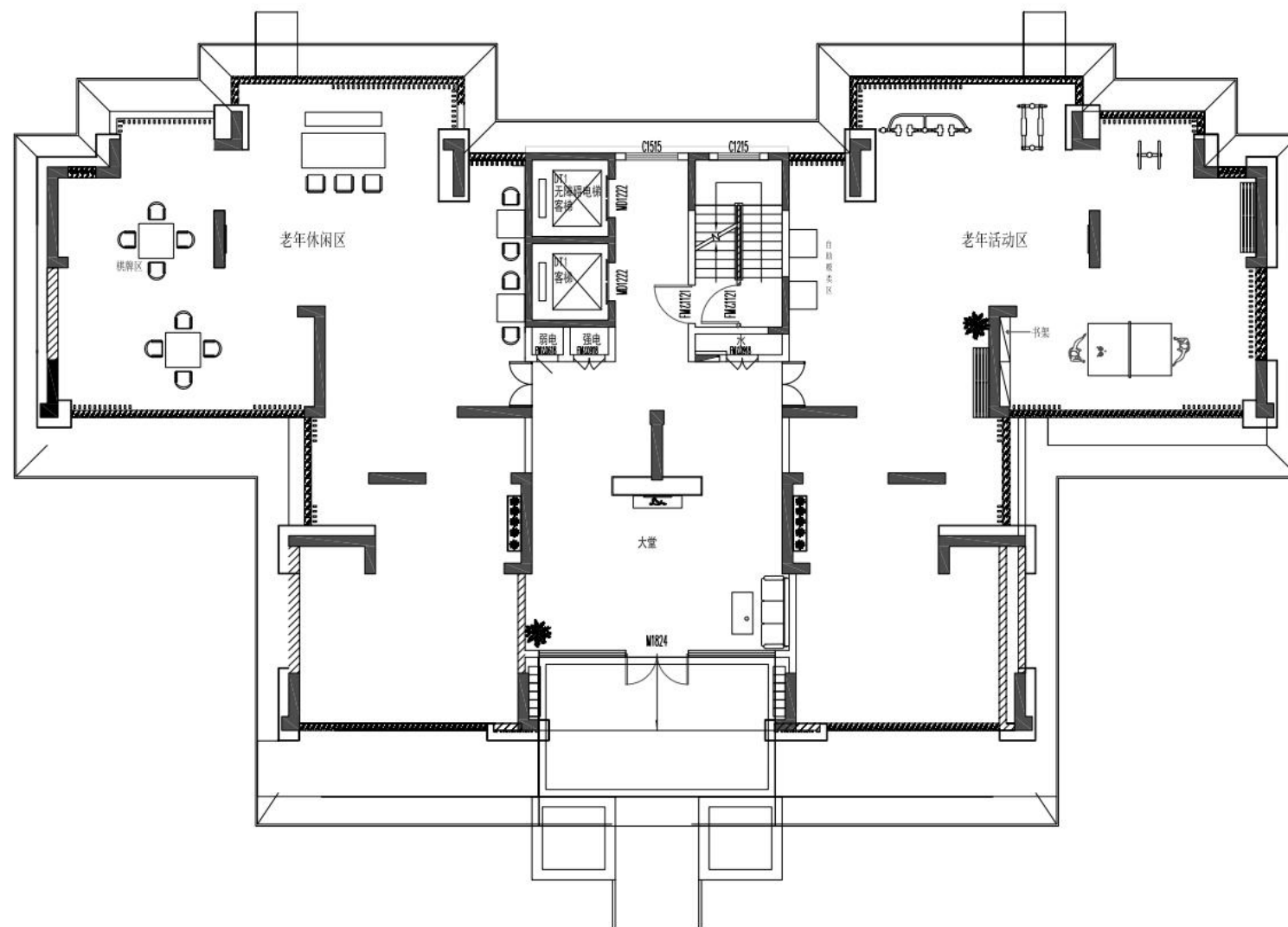
坐凳



云朵挂饰

# Floor Plan

## 37号楼19栋 老年活动区





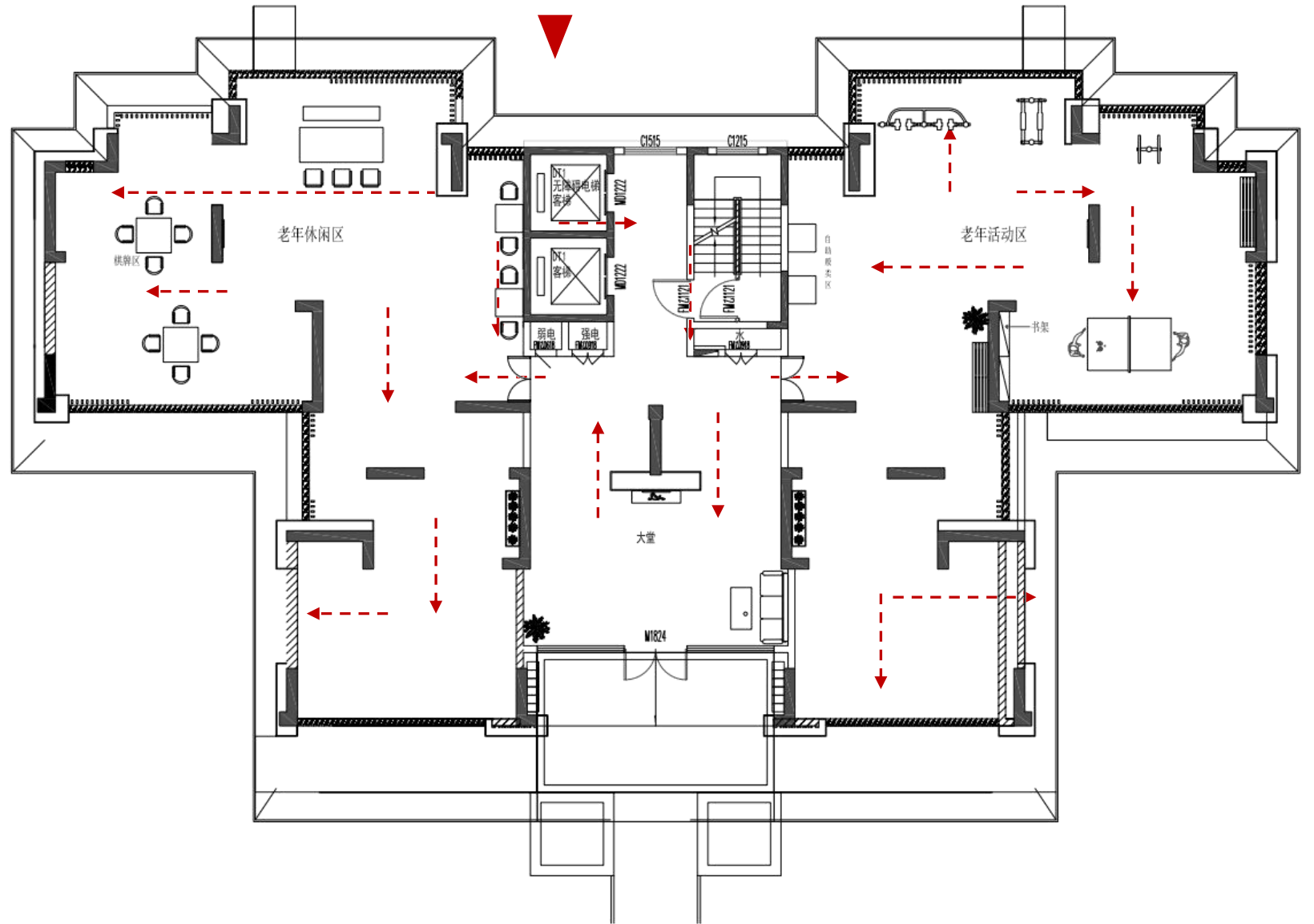
# Dynamic analysis

## 动线分析

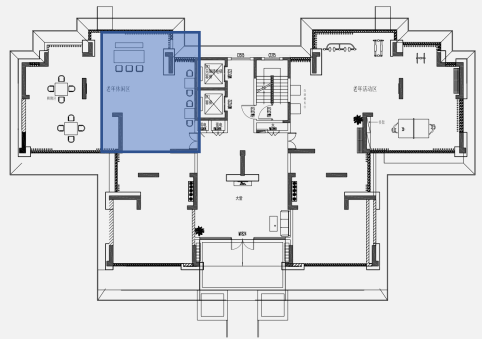
- 1: 保留足够的活动区域
- 2: 保证场所通道循环
- 3: 动静分区

▲ Please enter the title

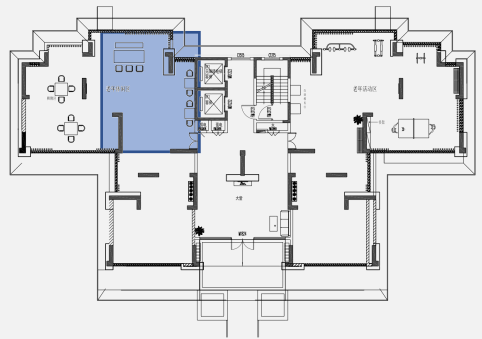
---▶ Please enter the title



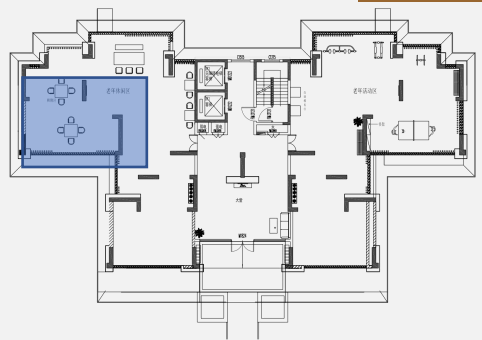
# 老年区 效果图展示



# 老年区 效果图展示



# 老年区 效果图展示



# Floor Plan

37号楼19栋  
老年休闲区  
产品配置



麻将桌



麻将椅/对弈椅



对弈桌



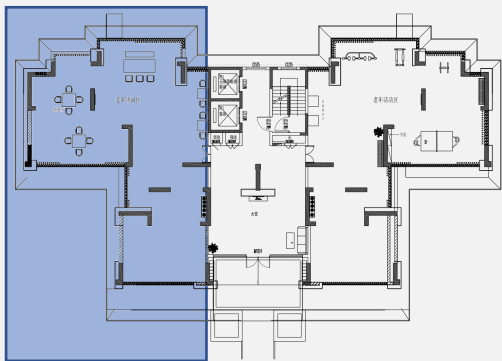
茶话桌



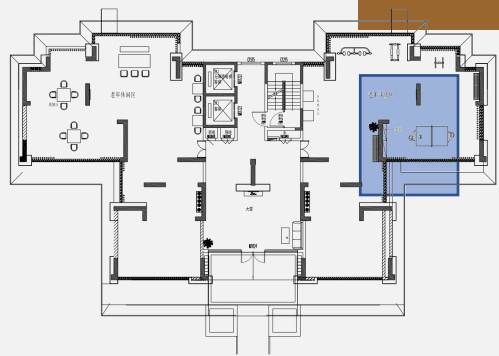
茶话椅



条凳



# 老年区 效果图展示



# Floor Plan

## 37号楼19栋 老年活动区 产品配置



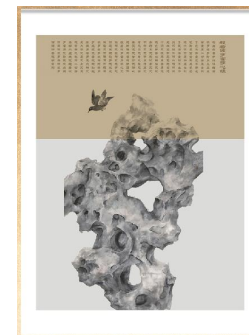
乒乓球桌



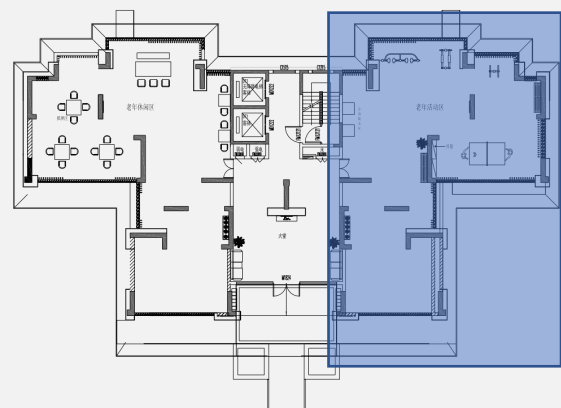
置物柜



条凳

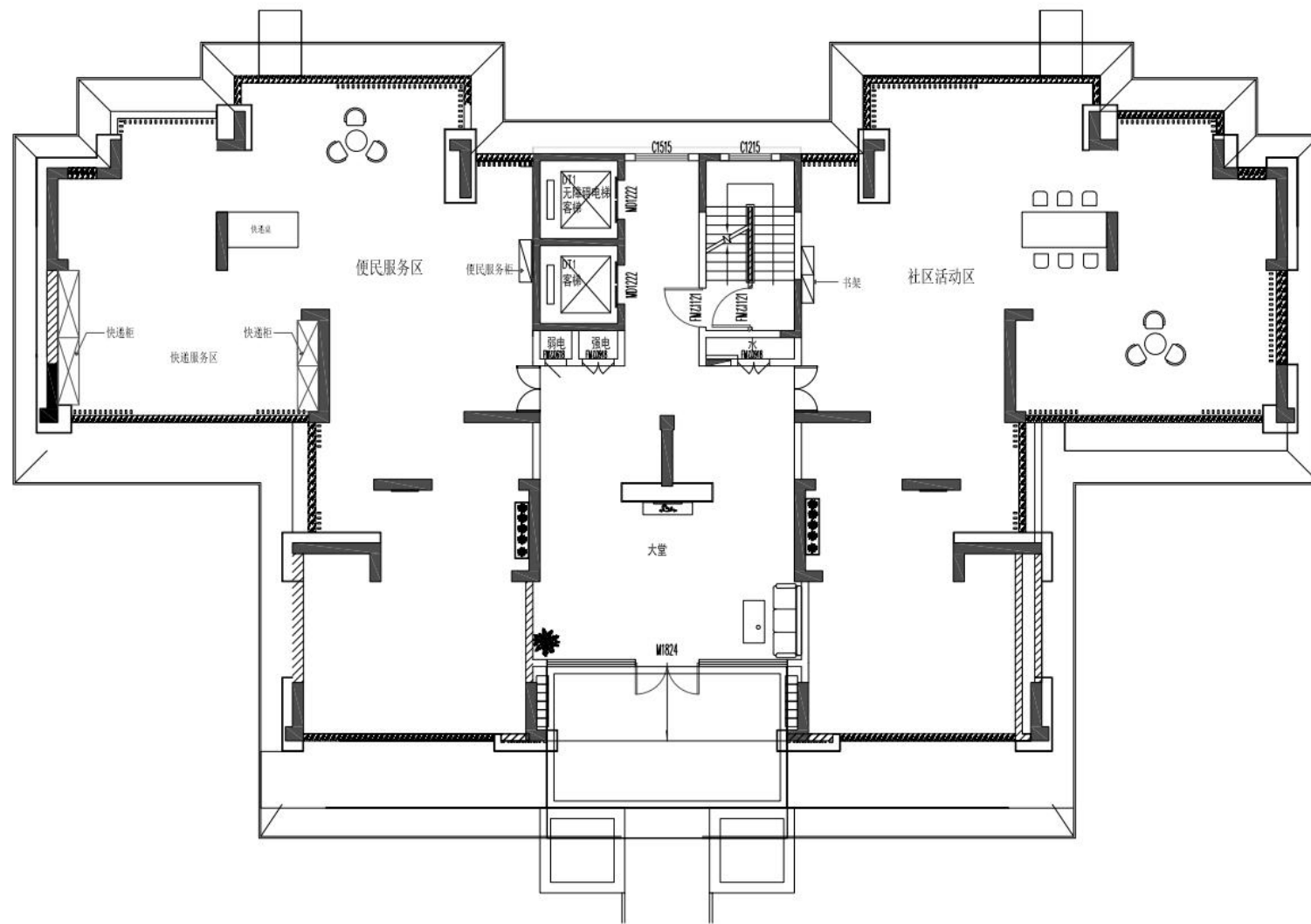


挂画



# Floor Plan

## 37号楼16栋 便民服务中心

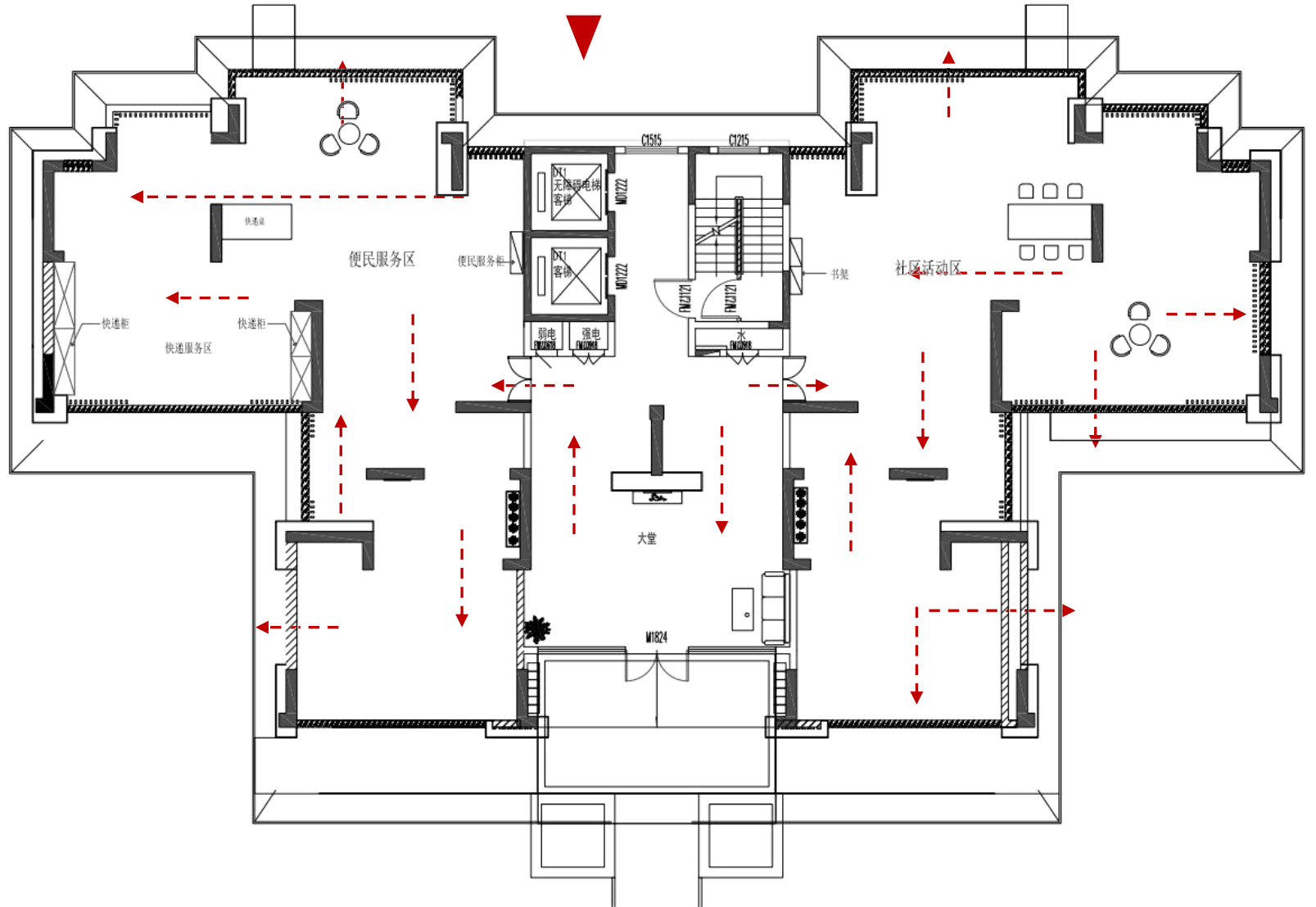




# Dynamic analysis

## 动线分析

- 1: 保留足够的活动区域
- 2: 保证场所通道循环
- 3: 功能分区

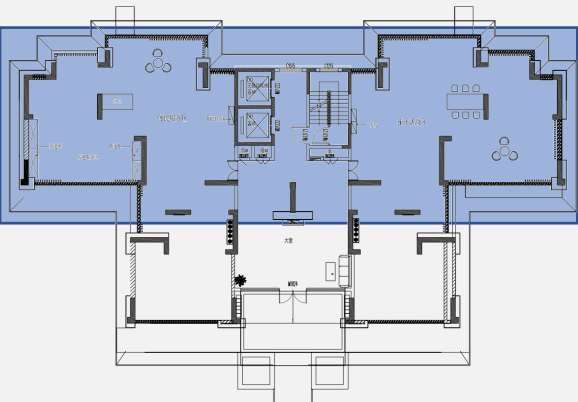


▲ Please enter the title

---▶ Please enter the title

# Floor Plan

## 37号楼16栋 便民服务中心 产品配置



休闲桌



休闲椅



拆快递桌



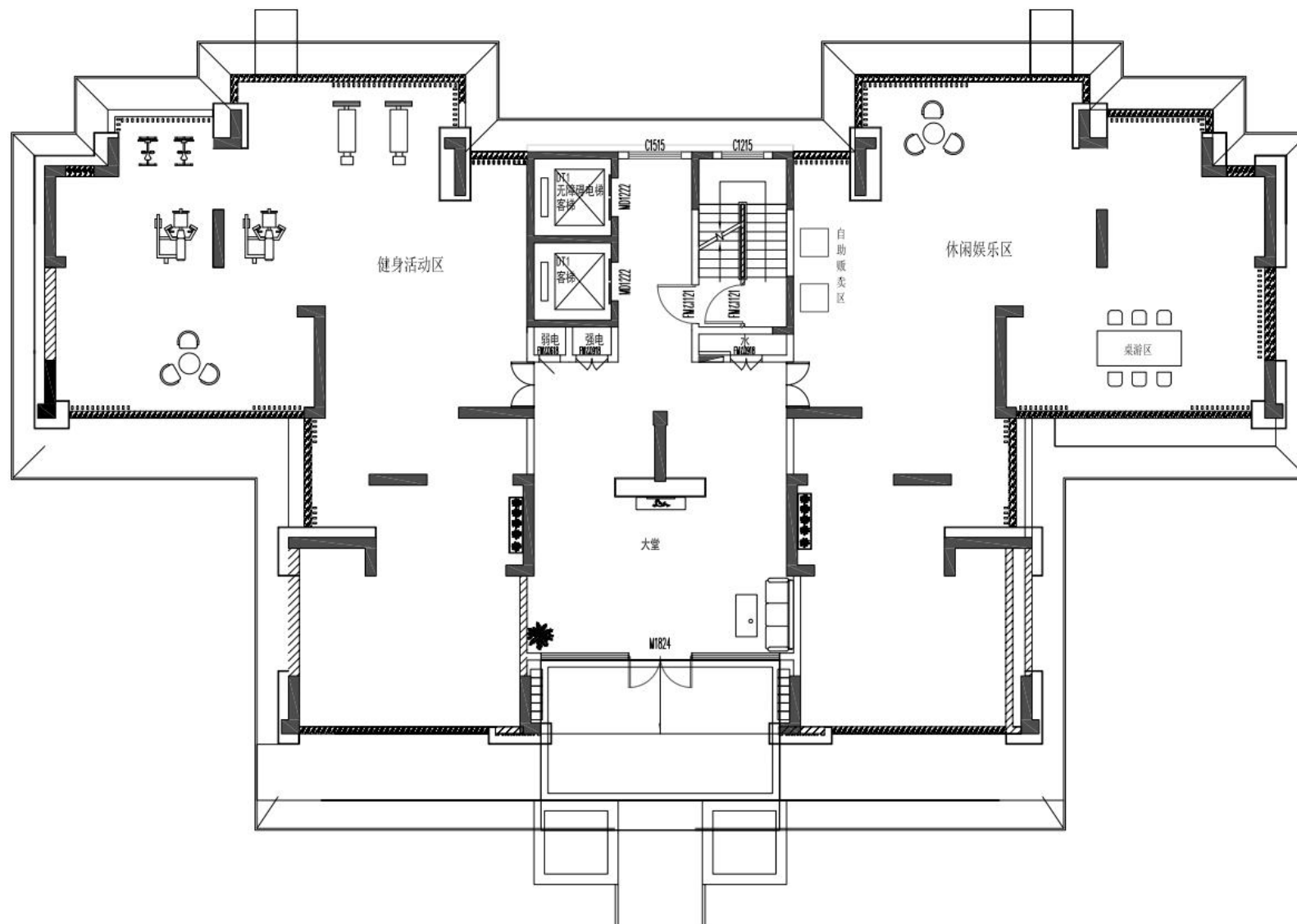
洽谈桌/洽谈椅



置物架

# Floor Plan

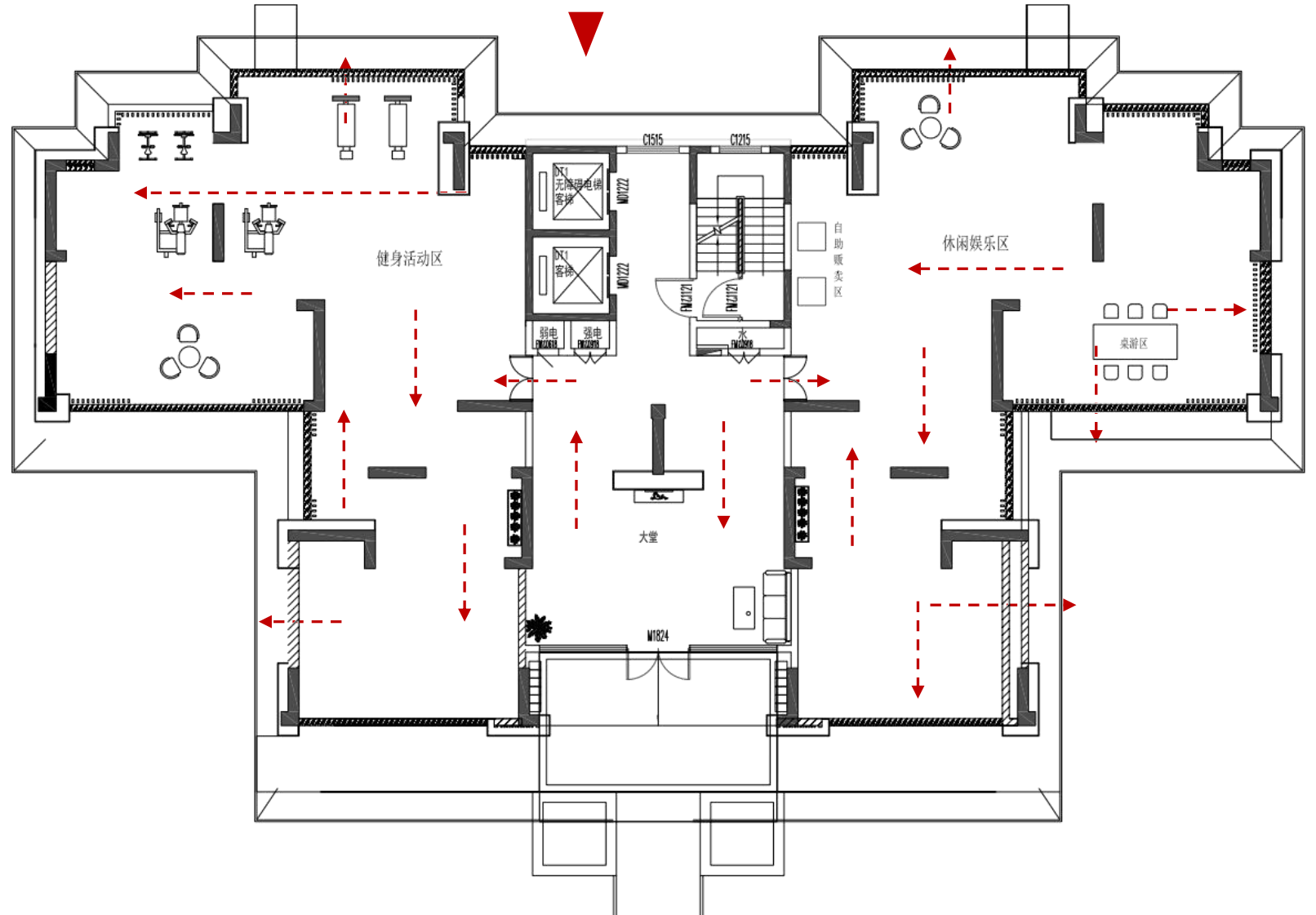
## 37号楼17栋 健身活动区



# Dynamic analysis

## 动线分析

- 1: 保留足够的活动区域
- 2: 保证场所通道循环
- 3: 功能分区

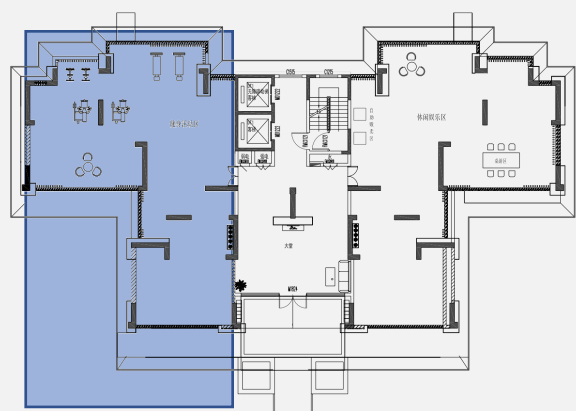


▲ Please enter the title

---▶ Please enter the title

# Floor Plan

## 37号楼17栋 健身活动区 产品配置



健身器材



健身器材



健身器材



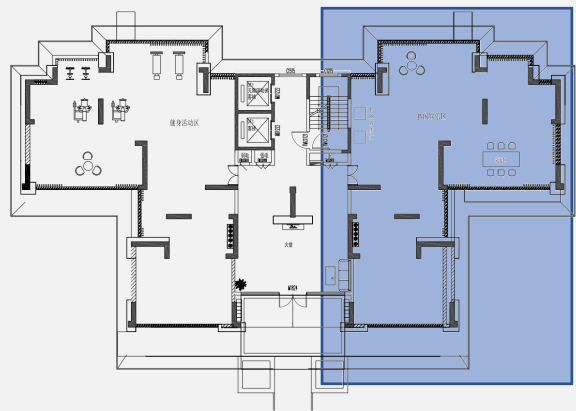
休闲桌



休闲椅

# Floor Plan

## 37号楼17栋 健身休闲区 产品配置



休闲桌



休闲椅



休闲桌



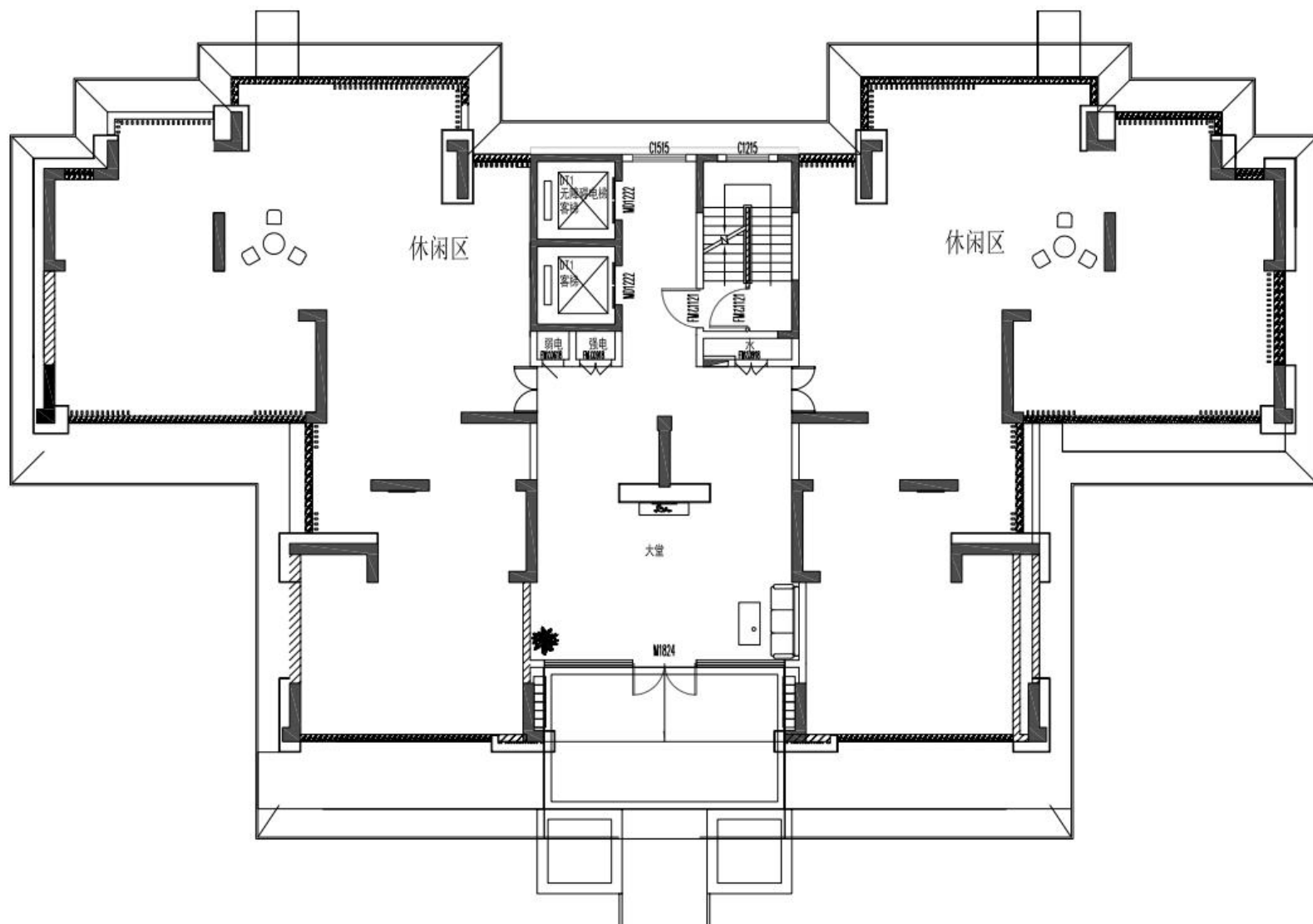
休闲椅



置物架

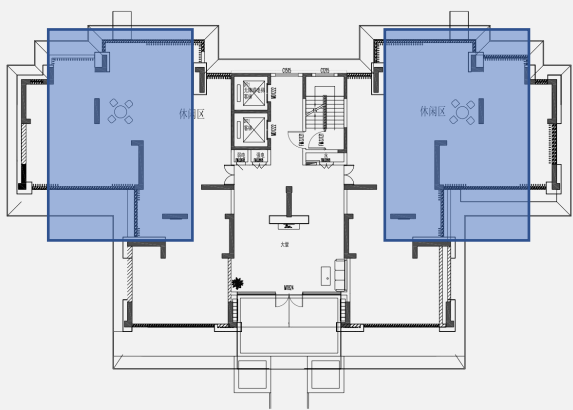
# Floor Plan

37号楼  
18/21/22/23栋  
架空层



# Floor Plan

37号楼  
18/21/22/23栋  
架空层



休闲桌

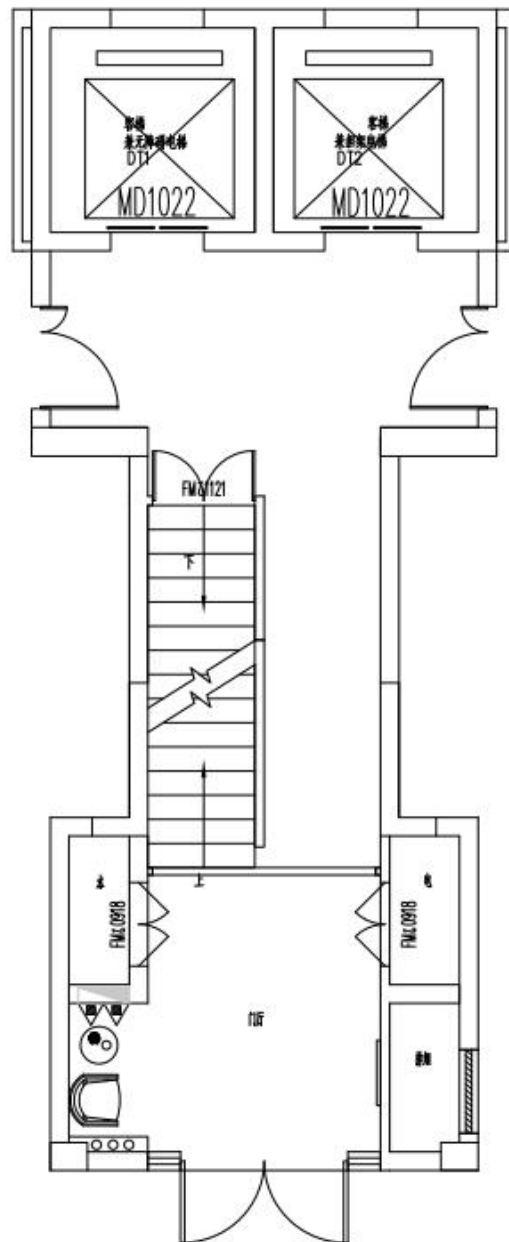


休闲椅

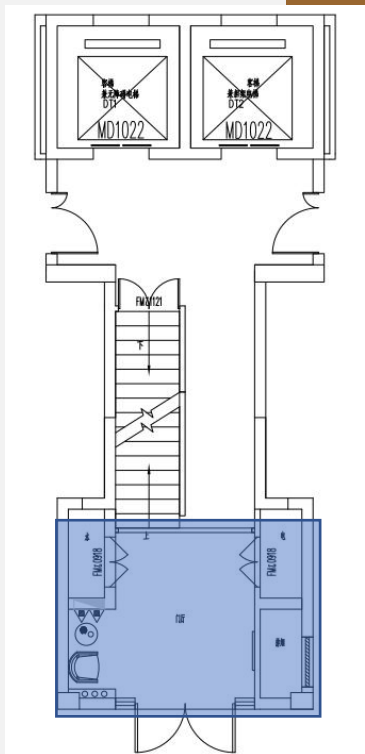


# Floor Plan

37号楼1-9栋  
入户大厅



# 37号楼1-9栋入户 大厅产品配置



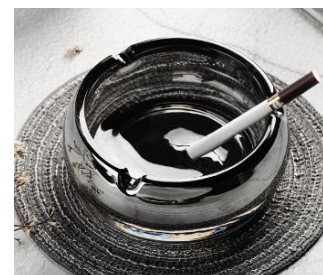
沙发



茶几



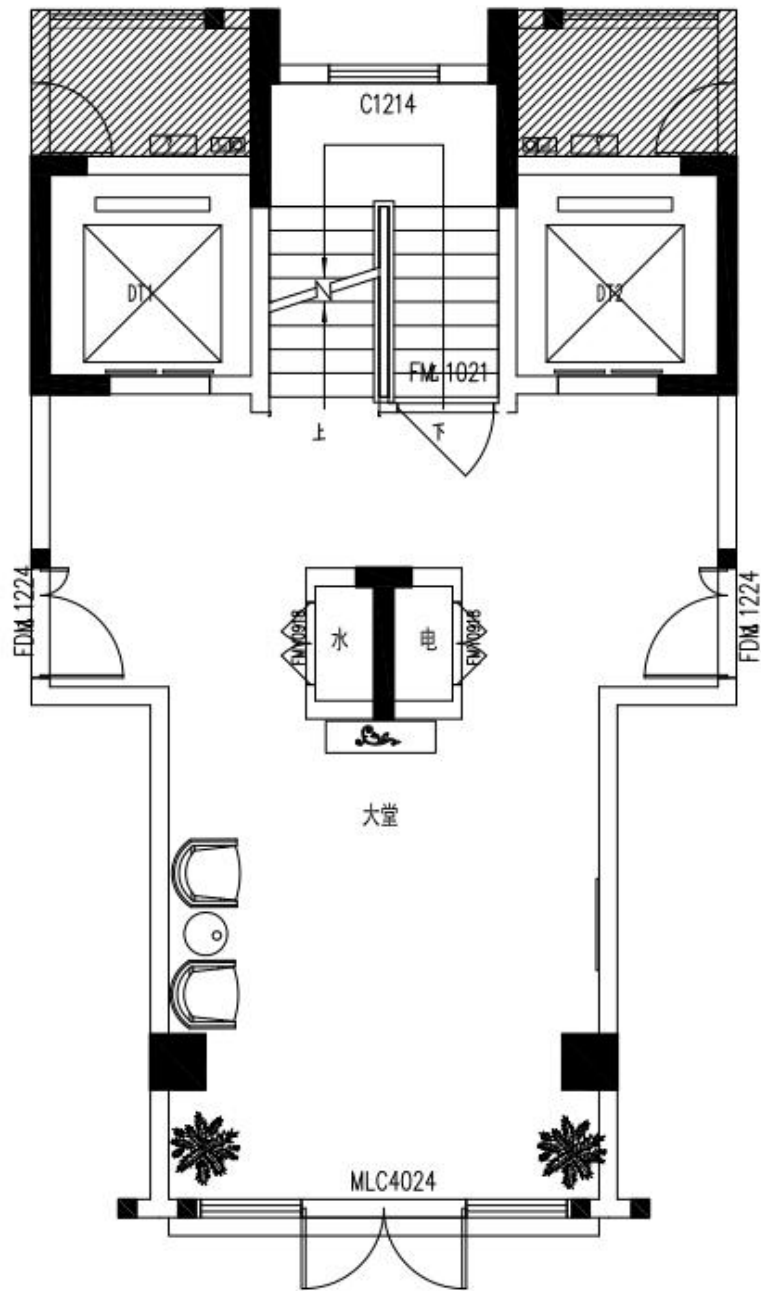
挂画



茶几烟灰缸

# Floor Plan

37号楼10-15栋  
入户大厅



# 37号楼10-15栋入 户大厅产品配置



端景台



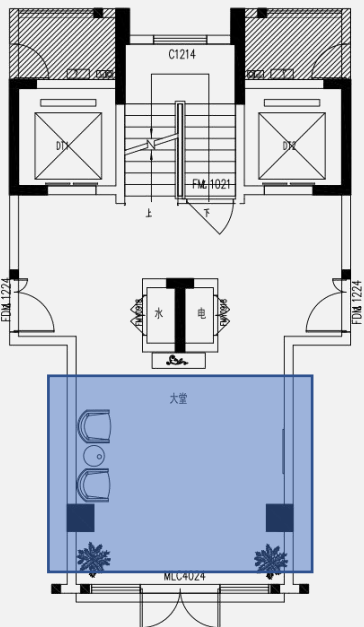
沙发



茶几



挂画



端景台摆件



端景台仿真绿植



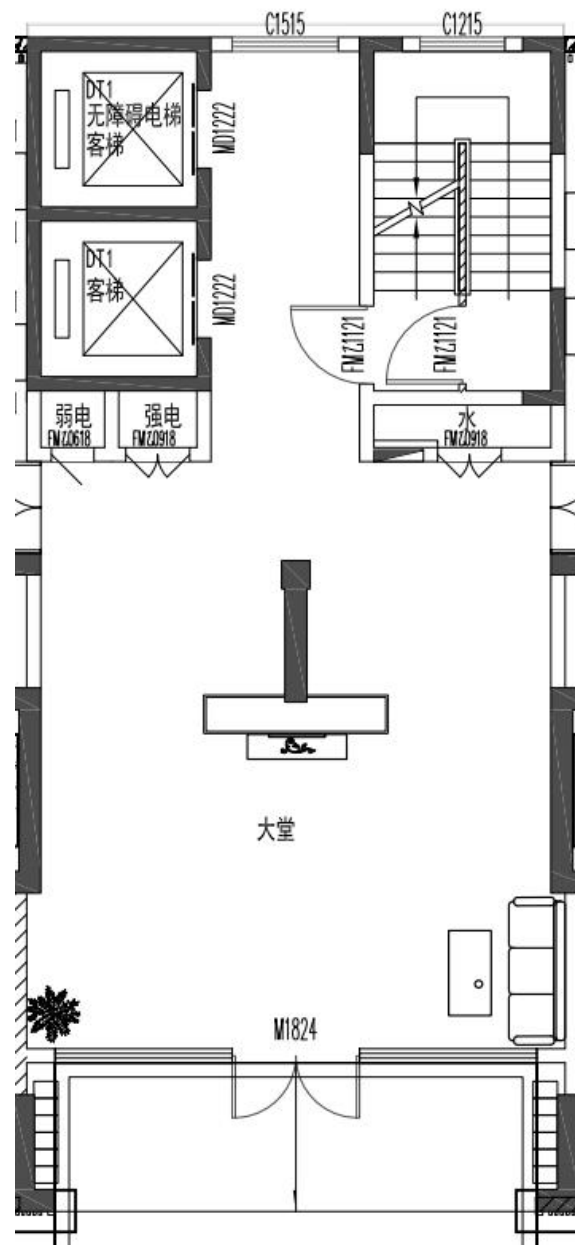
茶几烟灰缸



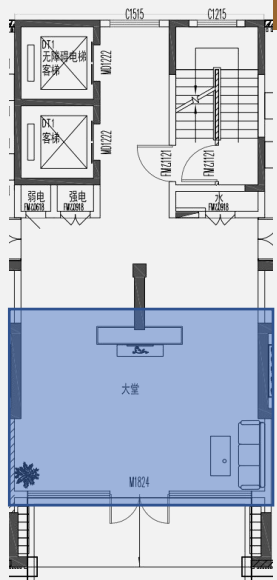
大厅仿真绿植

# Floor Plan

37号楼16-23栋  
入户大厅



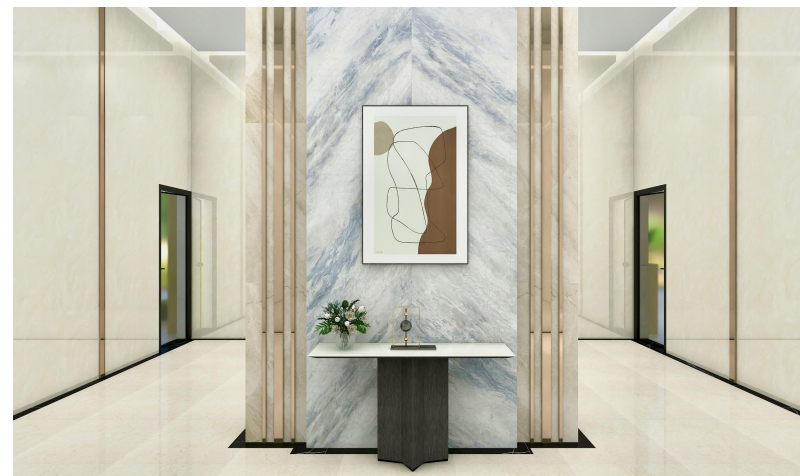
# 37号楼16-23栋入 户大厅场景参考



参考方案一



参考方案二



# 37号楼16-23栋入户大厅产品配置



端景台



沙发



茶几



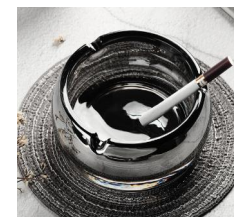
挂画



端景台摆件



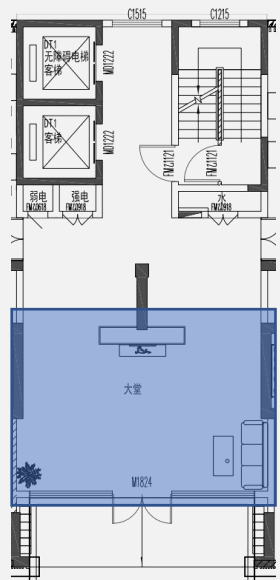
端景台仿真绿植



茶几烟灰缸

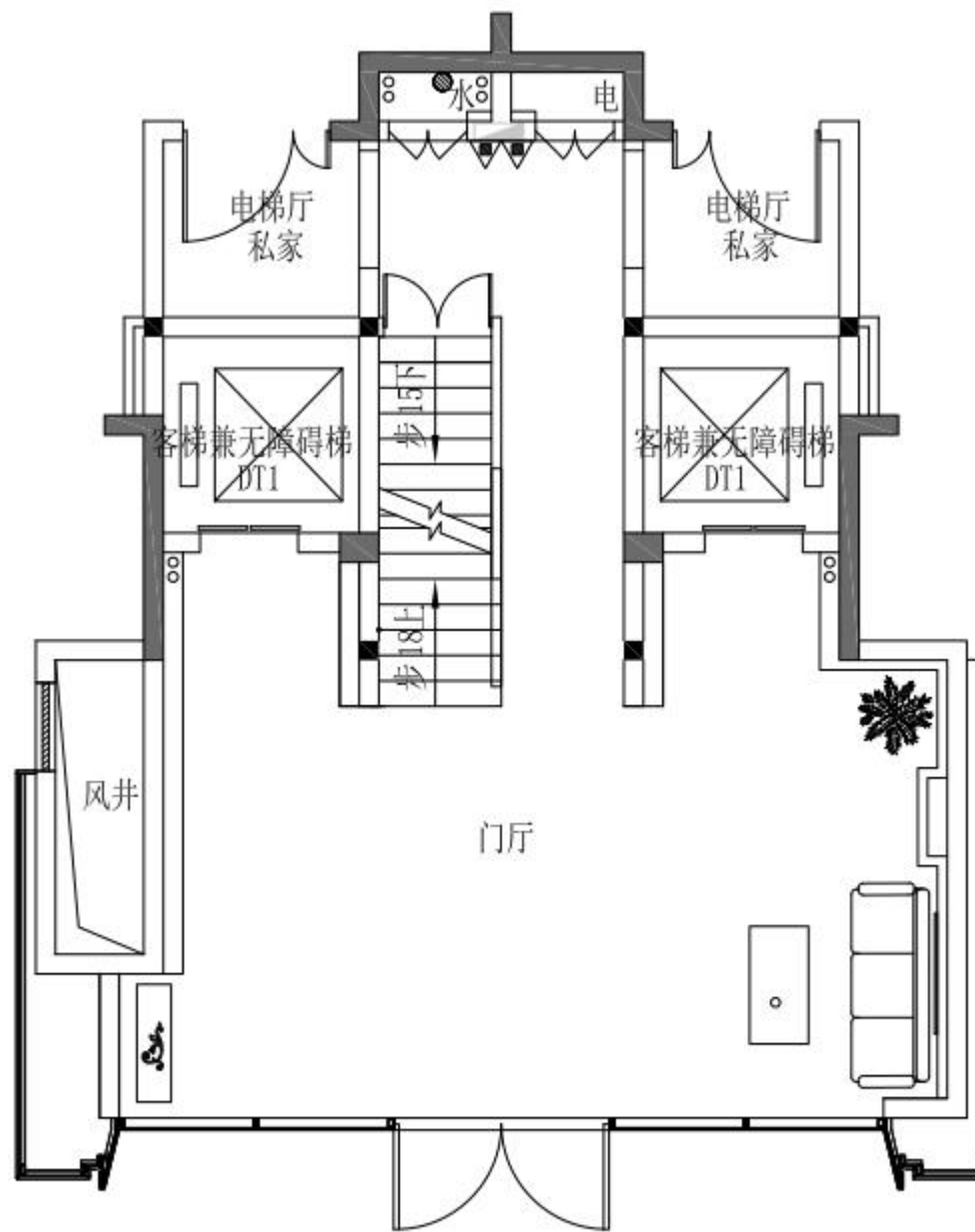


大厅仿真绿植



# Floor Plan

36号楼1栋、16栋  
入户大厅





# 产品配置



端景台



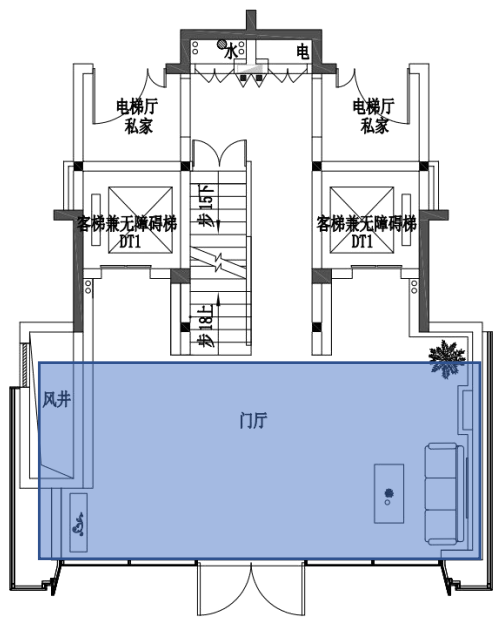
沙发



茶几



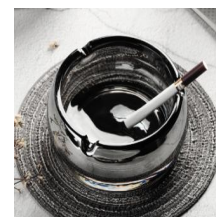
挂画



端景台摆件



端景台仿真绿植



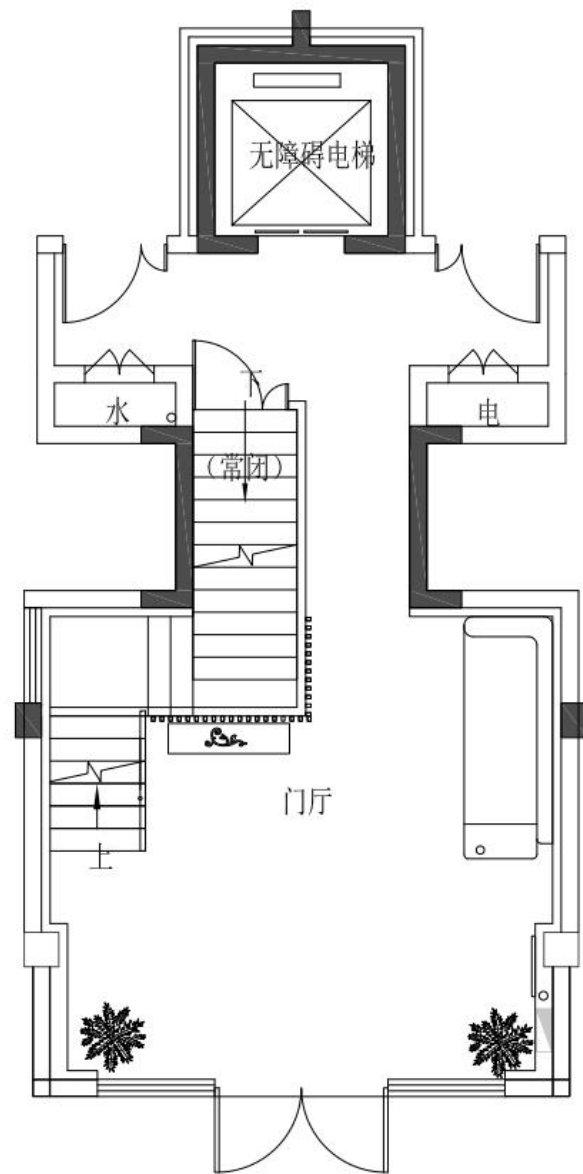
茶几烟灰缸



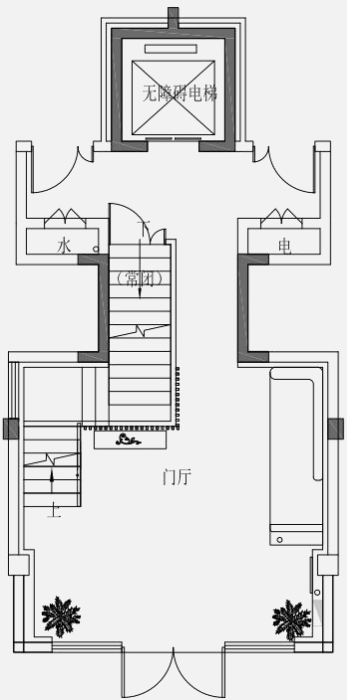
大厅仿真绿植

# Floor Plan

36号楼2、3、13、15栋  
入户大厅



36号楼2、3、13、  
15栋  
入户大厅场景参考



# 产品配置



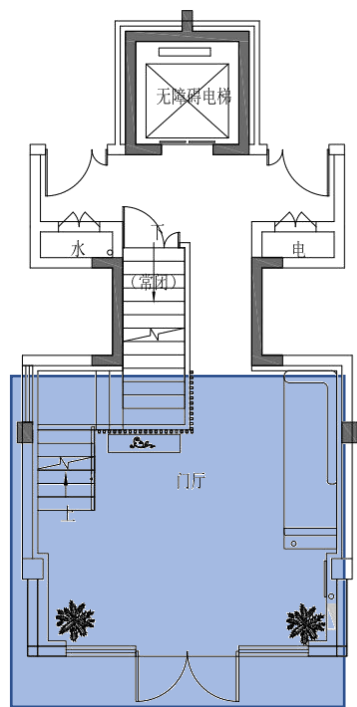
端景台



沙发



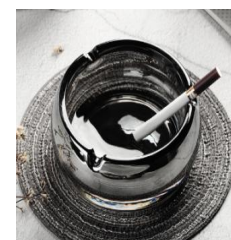
挂画



端景台摆件



端景台仿真绿植



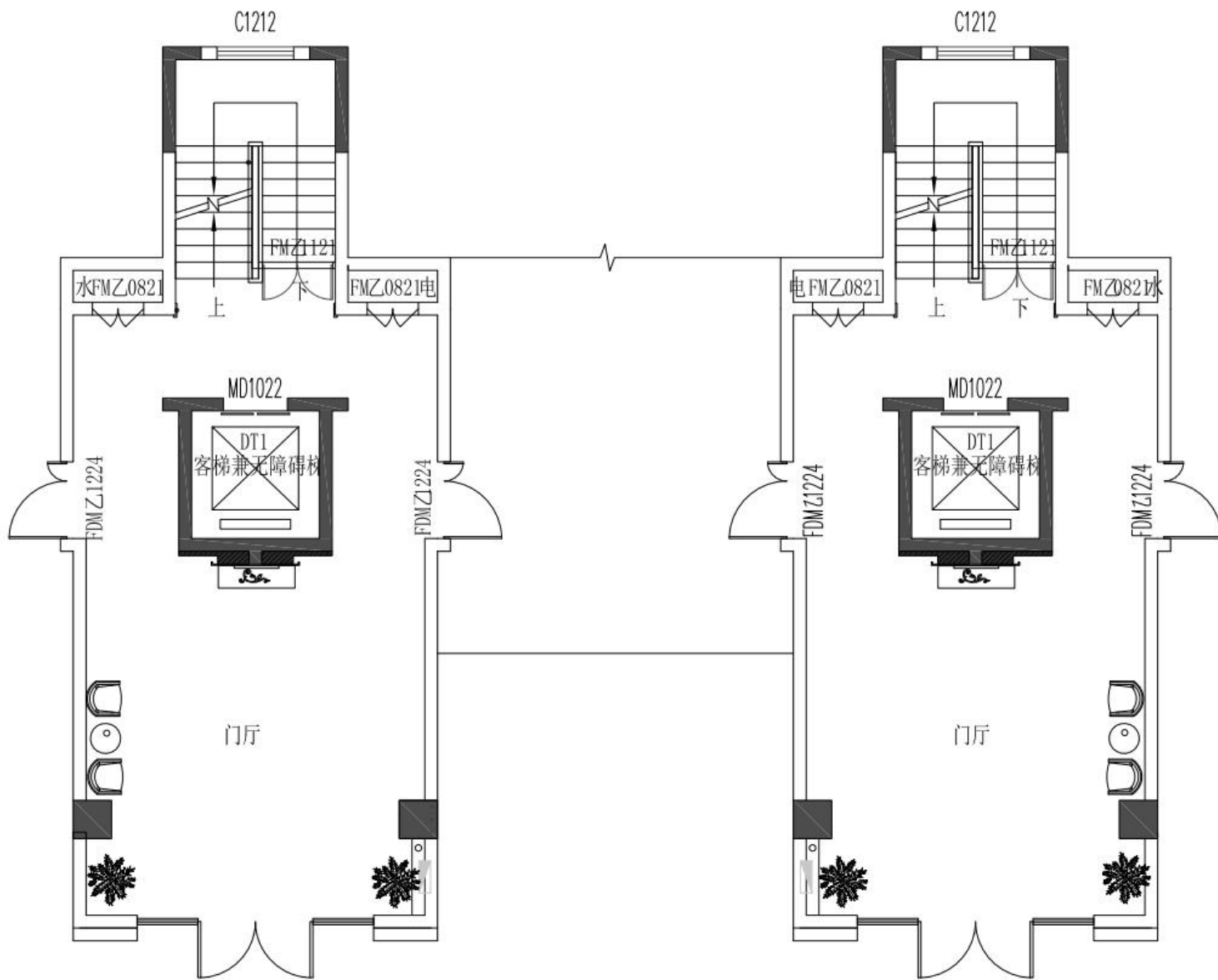
茶几烟灰缸



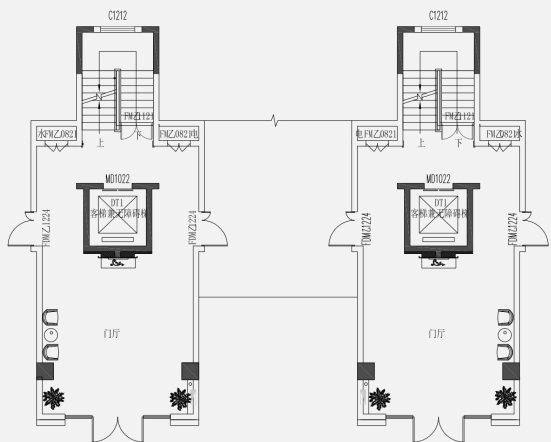
大厅仿真绿植

# Floor Plan

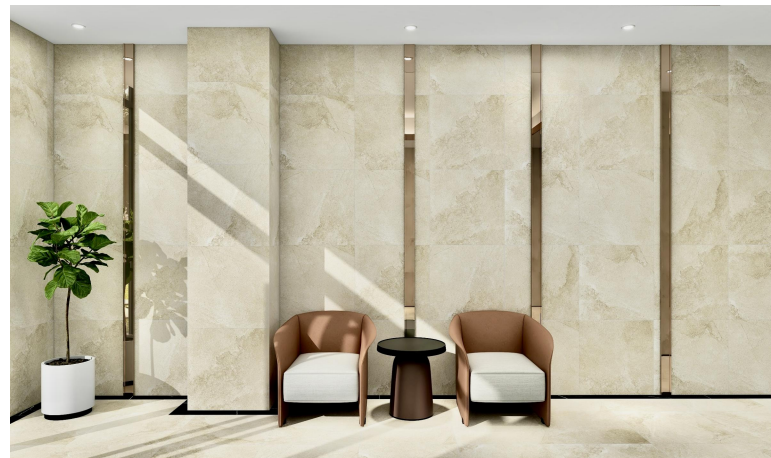
36号楼6栋  
入户大厅



# 36号楼6栋 入户大厅场景参考



参考方案一



参考方案二



# 产品配置



端景台



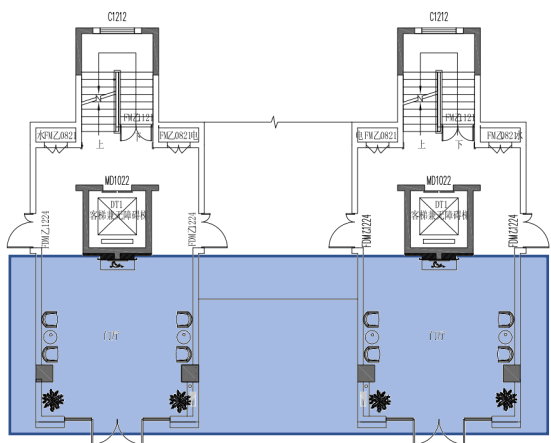
沙发



茶几



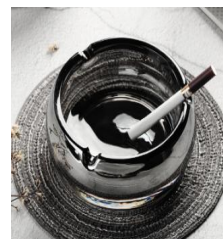
挂画



端景台摆件



端景台仿真绿植



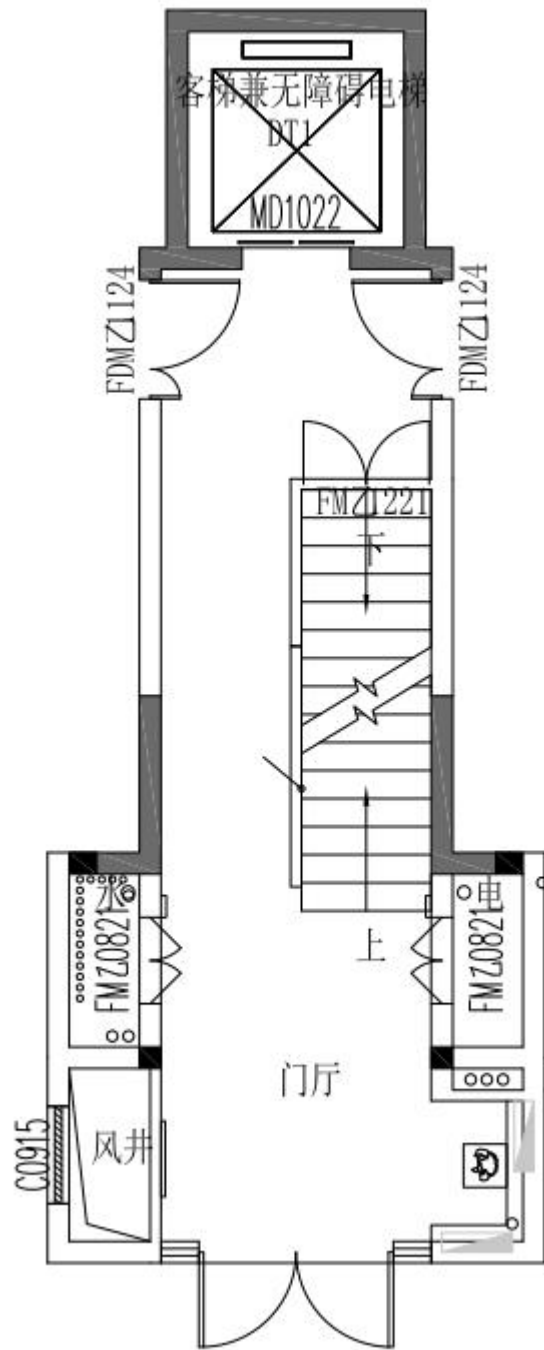
茶几烟灰缸



大厅仿真绿植

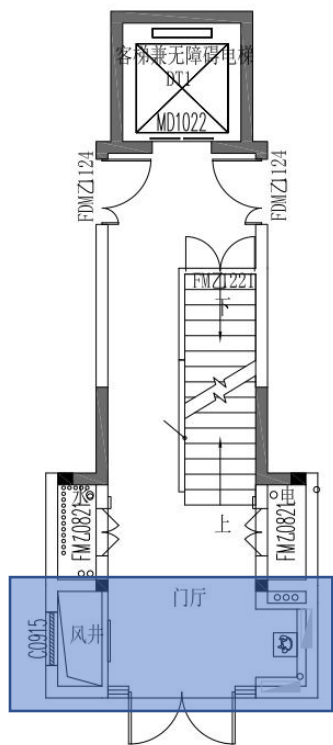
# Floor Plan

36号楼4、5、7、8、  
9、10、11、12、14栋  
入户大厅

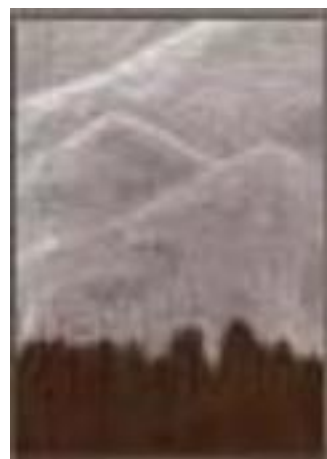




# 产品配置



仿真绿植



挂画



THANK YOU FOR WATCHING  
THANK YOU FOR WATCHING

